

DESIGN PROCESS

Your landscape design forms the foundation for a successful garden and it is important that we invest considerable time and effort during this process to ensure you are delivered a design that reflects your personal needs and lifestyle requirements. The following steps outline the process involved to give you a better understanding of what you can expect.

Initial garden consultation

- Talk through your budget considerations and discuss some initial ideas
- Get a design brief from you
- Provide a written quote for further design services such as a concept and planting plan
- Call out fee is \$120. Payment is due on the day. Eftos and Visa available

Site analysis and survey

- Photographs taken, measurements taken, spot levels. A quantity surveyor may be required if the site is complex with lots of levels to shoot. You will be supplied with a separate cost from them for this service.
- Soil, drainage, wind and sun considerations
- Recording positions of existing features and plants to be retained
- Assessing neighbouring properties for screening, shading, etc

Preliminary plan preparation

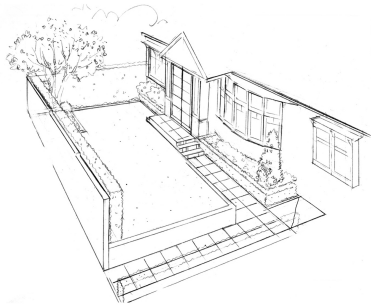
- Preparation of base plan with the information gathered
- Draw up location and species of plant selection
- Create plant reference sheet

Preliminary plan presentation

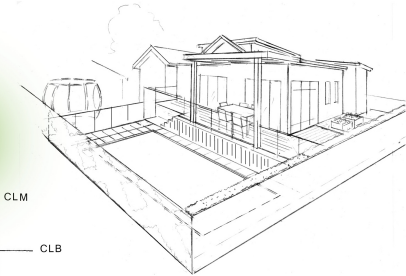
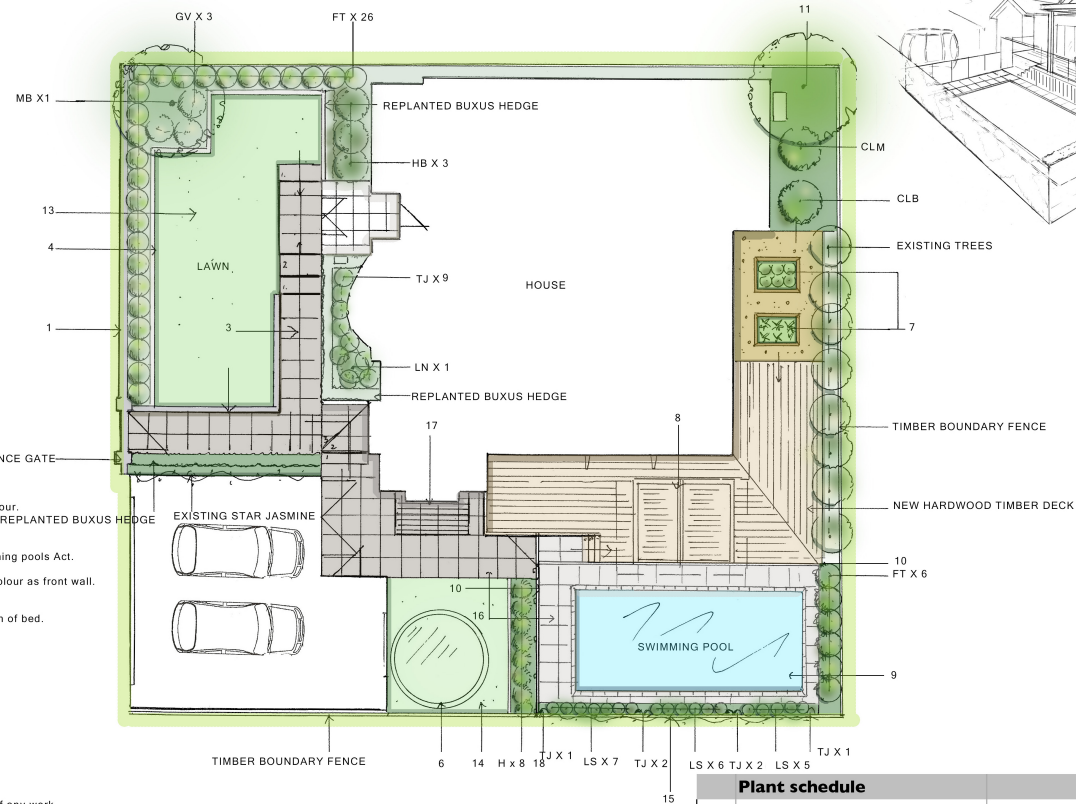
- Discussion and comments on preliminary plan
- Opportunity for customer input and plan modifications. Finalise design
- A second meeting may be allocated for to go over any changes you may make

Finalise design

- Refine ideas and incorporate any changes
- Finalise plan including structures and suggestions for materials/finishes
- Draft up plan
- Complete perspective sketch/sketches and plant reference sheet
- Send plan via email. Final invoice given



- Re-use existing Buxus hedging.
- Mulch gardens with a 70 - 100mm layer of Living Earth Reharvest Enviromix Black Woodchip.
- Re-paint all timber boundary fence.
- Add wires for any climbers on fence.
- Use timber stakes (painted same colour as fence) for large specimen trees/palms.
- Separate lighting plan from recommended lighting company recommended for outdoor lighting.
- Drainage as required and specified by landscape contractor.
- Please note this is a concept plan only and some further final specifications will be required when it comes to quoting and implementation.
- Contractor to check and verify dimensions, levels, angles and boundaries on site prior to commencement of any work.
- Please contact Flourish Gardens Concepts Ltd if you are unsure about the information presented.
- Seek resource and building consents as required.
- Check location of all underground services prior to excavations or drilling.



AB	Botanical Name	Common name	Size	Qty
CLM	<i>Citrus 'Lemon meyer'</i>	Lemon tree	PB 28	1
CLB	<i>Citrus 'Lime bears'</i>	Lime tree	PB 28	1
FT	<i>Ficus tuffy</i>		PB 8	32
GV	<i>Gardenia vetchii</i>		PB 8	3
H	<i>Hemerocallis spp</i>	Lemon day lily	PB 5	8
HB	<i>Hydrangea 'Bridal bouquet'</i>	White Hydrangea	PB 5	3
LN	<i>Laurus nobilis</i>	Bay tree spiral or pyramid	PB 95	1
MB	<i>Magnolia 'Brixton Belle</i>		PB 95	1
LS	<i>Lirope 'Samantha'</i>	Turf lily	PB 3	18
TJ	<i>Trachelospermum jasmines</i> - for ground cover	Star Jasmine	PB 5	9
TJ	<i>Trachelospermum jasmines</i> - on 1m high canes	Star Jasmine	PB 5	6

Please note: Plant sizes are suggestions only and are determined by clients budget and availability at time of ordering.

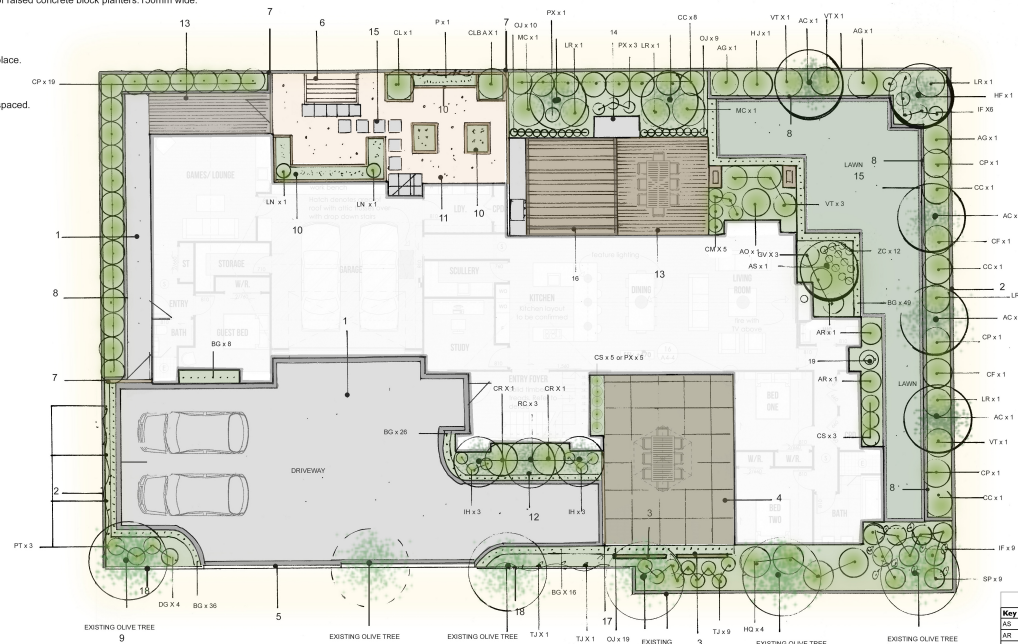
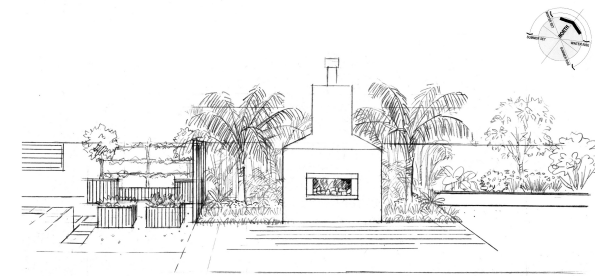


Scale: 1:100 @ A2
Date: 8 October 2016
Drawn by: Sandra Batley

62 Brighton Road, Parnell - Barnett residence
Proposed residential development - Landscape concept and planting plan

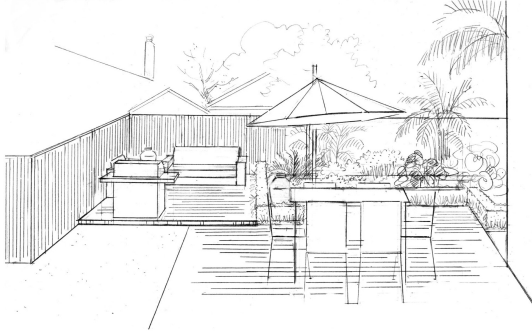
- 1) Exposed pebble driveway and side path with coloured concrete border @ 200mm wide.
- 2) Existing concrete masonry block boundary walls. Plaster rendered and painted.
- 3) Corten laser cut decorative panels. 2m high x 2.2m wide. Pattern tbc.
- 4) Coloured concrete courtyard with large decorative, grouted cuts.
- 5) Proposed future sliding gate.
- 6) Fold-down clothesline. Client to confirm size required.
- 7) Raised high gate and side screen. Cedar vertical slates. Stain, colour tbc.
- 8) 1.8m masonry concrete block garden beds, 400mm high for back garden, 200mm for side garden.
- 9) Existing Olives. Keep pruned to size and shape.
- 10) Raised vegetable and herb planters. 400mm high and 700mm for Citrus planters. Pine timber frames, faced with Cedar slats and a wide timber cap. Stain, colour tbc.
- 11) Small grade decorative pebbles for utility area. Colour to harmonise the house and boundary wall colours. 500mm² concrete pavers as stepping stones.
- 12) Feature entrance garden. Keep Nikau fronds cut back to keep compact in size.
- 13) Hardwood Kwiha timber deck.
- 14) Outdoor fireplace as per architects plans.
- 15) Woolgrov lawn with coloured concrete mowing strips around all gardens and base of raised concrete block planters. 150mm wide.
- 16) Louvre opening roof pergola as per architects plans.
- 17) Solid fence with gate, detail tbc.
- 18) Existing slat fences - paint.
- 19) Garden art as focal point. Underplanting tbc after art has been chosen and put in place.

-



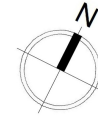
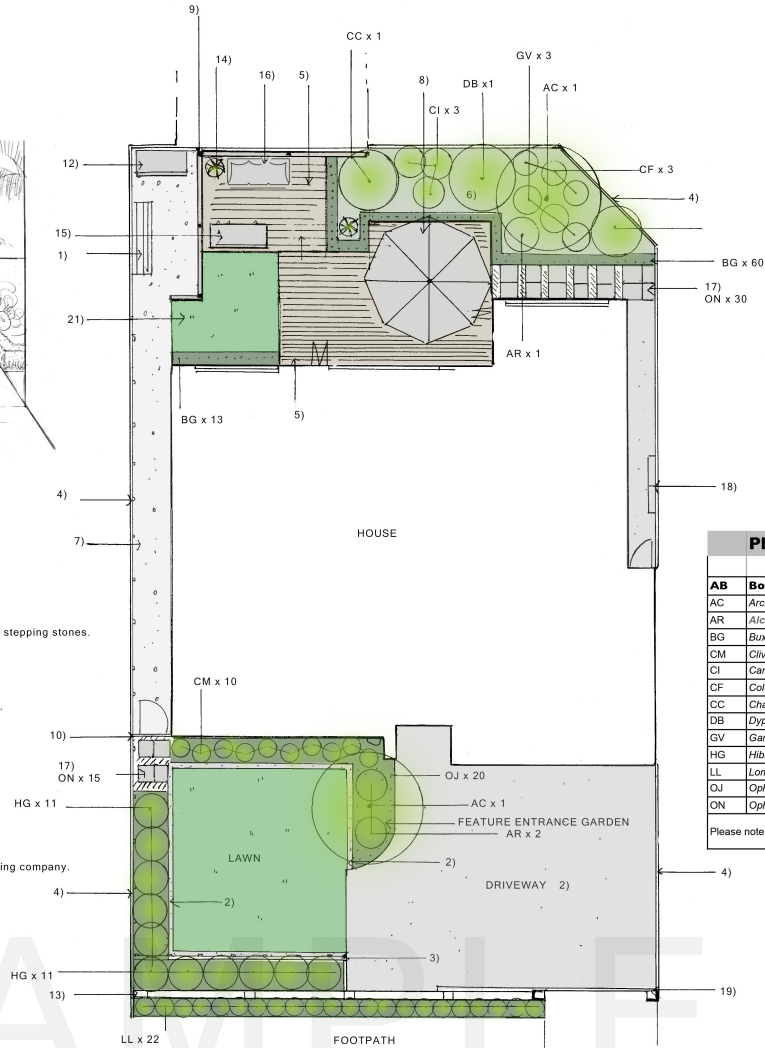
Plant schedule					
Key	Botanical Name	Common Name	Size	Quantity	Centres (metres)
AS	<i>Acer palmatum</i> 'Satanik'	Japanese maple tree	PB 65	1	
AS	<i>Aspidistra elatior</i> 'variegata'	Resurrection plant	PB 65	1	
AL	<i>Asplenium oblongifolium</i>	Fern	PB 6	1	
AR	<i>Abies balsamea</i> 'Inferno'	Green bromeliad	PB 8	2	
AB	<i>Abies balsamea</i> 'green'	Green tree	PB 8	1	0.50
BC	<i>Buxus</i> 'Green spang'	Box hedging	PB 5 or 8	135	0.30
CC	<i>Chamaelirium luteolum</i>	Cluster palm	PB 40	11	
CR	<i>Cycas revoluta</i>	Japanese sago palm	SL 12	2	
CR	<i>Crataegus laevigata</i> 'Paradise tree'	Camelthorn	PB 12 or 16	15	1.00
CL	<i>Citrus Lemon berry</i> - standard	Lemon tree	PB 40	1	
CLB	<i>Citrus Lime berry</i> - standard	Lime tree	PB 40	1	
CS	<i>Cordyline 'Choclat'</i>		PB 5	3 or 6	
CM	<i>Cycas minima</i> 'Fragrant'	Kaffir Lily	PB 5	5	
CF	<i>Calceolus formosus</i> 'Black magic'	Black fern	PB 5	2	
CF	<i>Calceolus formosus</i>	Calceolus	PB 5	3	
CG	<i>Delonix grandiflora</i>	Two week fly	PB 5	4	
GV	<i>Gardenia vetulii</i>		PB 8	3	0.50
HQ	<i>Hydrangea quercifolia</i> 'Shoefane'		PB 5	4	
HJ	<i>Howea forsteriana</i>	Kentia palm	PB 40	1	
HJ	<i>Hibiscus</i> 'Jim berry'		PB 5	1	
IF	<i>Isomira Ravalli</i>		PB 5	9	
IP	<i>Ipomoea Acaulis</i>	Blood steak	PB 5	5	
LB	<i>Ligularia reifolius</i>	Tractor seat	PB 5	5	
LN	<i>Leaves nobile</i> - standard	Bay tree	25H	2	
ML	<i>Monarda Camilla</i>	Coral palm	PB 40	2	
OU	<i>Ostrya japonica</i>	Green mondo grass	7 cm tubes	38	0.30
PX	<i>Philodendron 'Incanat'</i>		PB 8	9 or 4	
F	Fern		PB 28	1	
PT	<i>Pachystima hirsuta</i>		PB 5	3	
BC	<i>Brachyotylepis capata</i> 'Chamaelir'	Chamaelir plant	PB 40 or larger	3	
SP	<i>Strelitzia reginae</i>	Strelitzia palm	PB 40	9	
SP	<i>Strelitzia reginae</i>	Chinese star jasmine	PB 5	1	0.50
TR	<i>Trachelium japonicum</i> - on top high canes	Chinese star jasmine	PB 5	2	
VT	<i>Vitis</i> 'Triple grapes'		PB 5	6	0.50
ZC	<i>Zantedhaea acaulis</i>	Rain fly	PB 5	12	

Please note: PB items are suggestions only and are determined by the clients budget and availability of plants in stock.



Design Notes

- 1) Fold-down clothesline attached the fence.
 - 2) Exposed pebble concrete and mowing strips.
 - 3) Low timber retaining wall.
 - 4) New timber paling fence. Stain black. 1.8 m and 1.4 m high as required.
 - 5) Kwila or Vitex deck. 140 x 19mm timber decking.
 - 6) Mixed tropical planting.
 - 7) Small grade grey pebbles laid on Jakmat. Optional 500mm2 concrete pavers set into pebbles as stepping stones.
 - 8) 3m cantilever umbrella anchored to deck. Exact location to suit clients needs.
 - 9) 2.2m high vertical timber slat screen. Timber profile tbc by builder. Stain/oil finish tbc.
 - 10) Timber side gate, same finished height as side fence.
 - 11) Existing timber retaining wall clad with timber palings.
 - 12) Shed.
 - 13) Horizontal weatherboard cedar panels between painted brick columns. Column height increased.
 - 14) Feature pots.
 - 15) Outdoor portable BBQ.
 - 16) Outdoor furniture.
 - 17) 500mm pavers with dwarf green mondo grass in between.
 - 18) Woolly pocket or similar green wall planter attached to fence.
 - 19) Sliding driveway gate.
 - 20) Concrete path.
 - 21) Tiger turf/
- All new and existing garden beds at ground level to be carefully prepared before planting.
 - Mulch gardens with a 70 - 100mm layer of Living Earth Reharvest Enviromulch Black Woodchip
 - Automated irrigation and lighting recommended. Separate lighting plan provided by specified lighting company.
 - Drainage to be specified by contractor/builder.
 - Keep Buxus hedge clipped to aprox 300mm high.



Plant schedule

AB	Botanical Name	Common name	Size	Qty	Spacings
AC	<i>Archontophoenix cunninghamiana</i> - multi trunk	Bungalow palm	PB 95	2	
AR	<i>Alcantarea imperialis rubra</i>		PB 12	3	
BG	<i>Buxus 'Green gem'</i>	Box hedging	PB 5	73	250 mm
CM	<i>Clivia miniata 'Fire glow' or 'Moon glow'</i>	Red and yellow Kaffir lily	PB 5	10	500 mm
CI	<i>Canna iridifolia</i>	Nodding canna	PB 5	3	1m
CF	<i>Colocasia 'Black magic'</i>	Black taro	PB 5	3	700 mm
CC	<i>Chamaedorea costaricana</i>	Bamboo palm	PB 95	2	
DB	<i>Dypsis baronii</i>	Golden cane palm	PB 40	1	
GV	<i>Gardenia vetch</i>		PB 8	3	800 mm
HG	<i>Hibiscus 'Golden belle'</i>	Yellow hibiscus	PB 8	11	1m
LL	<i>Lomandra 'Little con'</i>		PB 3	22	500 mm
OJ	<i>Ophiopogon japonicus</i>	Green mondo grass	7 cm tubes	20	300 mm
ON	<i>Ophiopogon nana</i>	Dwarf green mondo grass	7cm tubes	45	200 mm

Please note: Plant sizes are suggestions only and are determined by clients budget and availability at time of ordering



Sandra Batley Dip LD
Landscape Designer

p 09 444 7204
m 0275 109872
e sandra@flourishgardens.co.nz
w www.flourishgardens.co.nz

Scale: 1:100 @ A2
Date: 25 July 2016
Drawn by: Sandra Batley

31A Torrence Street, Epsom
Proposed residential development - Landscape concept and planting plan

PLANT REFERENCE SHEET



Gardenia vetchii

GV



Zephernathes candida

ZC



Iris 'Adams choice'

IA



Hydrangea 'Snowball'

HS



Ligularia reniformus

LR



Hemerocallis 'Eighteen Karat'

HE



Alstromeria 'Inca sunshine'

AI



Prav

PA

Alstromeria 'Mayfair purple'

AM



Hebe 'La Seduisante'

HS



Bergenia 'Bressingham white'

BW



Iris 'Cotton charmer'

IC



Hydrangea 'Nightingale'

HN